



Inclusion
Agency



gowriesa.org.au

The Inclusion Support Program is funded by
the Australian Government Department
of Skills, Education and Training

Gowrie
South Australia

Inclusion Agency Support

Gowrie SA is the Inclusion Agency for South Australia delivering free inclusion support services under the Australian Government's Inclusion Support Programme (ISP). We provide assistance to all eligible Early Learning and Child Care (ELCC) services to build their capacity to include children with diverse needs and/or backgrounds within mainstream services.

The Inclusion Agency will assist ELCC services to include all children by providing tailored inclusion advice and support from Gowrie SA Inclusion Professionals.

Gowrie SA is working towards inclusion for all children in education and care settings to support:

- Children with a disability or undergoing assessment
- Aboriginal and Torres Strait Islander children
- Children from culturally and linguistically diverse backgrounds
- Children from refugee or humanitarian backgrounds
- Children with serious medical conditions
- Children presenting with language and speech delays
- Children presenting with disruptive behaviour

We provide support for Child Care Subsidy (CCS) approved services including:

- Long Day Care
- Outside School Hours Care, including Vacation Care
- Family Day Care
- Occasional Care
- Mobile Services

How will we support your service?

We have a large and diverse team of experienced Inclusion Professionals who will work directly with a service to:

- Develop and implement a tailored Strategic Inclusion Plan (SIP), which will support the Quality Improvement Plan (QIP).
- Assist educators and teams to critically reflect on their practices and identify barriers to and possibilities for inclusion.
- Acknowledge strengths and reflect on understandings of inclusion.
- Provide practical advice on quality inclusive practices to support educators to overcome barriers to a child's inclusion.
- Access to all Inclusion Support Programme resources including specialist equipment.
- Facilitate access to funding streams to support more challenging inclusion barriers and endorse any funding applications.
- Support services to apply to become 'Inclusion Aware.'
- Link with relevant community groups, services and organisations that support inclusion.
- Support educators to work in partnership with families and other support networks.
- Discuss available options regarding 'Innovative Solutions' funding.

Specialist Equipment Library

A free service for all eligible education and care services to borrow specialist equipment, where a need is identified by a Therapist or Inclusion Professional (IP). As the Inclusion Agency (IA) for South Australia, we will arrange the delivery of specialist equipment to all eligible services.

A catalogue of pieces is available to view on our website.

Inclusion Aware

Inclusion Awareness is a component of inclusive practices which refers to the consistent and considered thought given to environments, resources and planning to ensure you are ready and able to welcome children (and families) with a range of needs, abilities, interests and backgrounds.

To be considered 'Inclusion Aware' services would demonstrate that:

- They have an active Strategic Inclusion Plan in place.
- Environments and programs are planned to support participation and recognise strengths of children.
- The focus is on the whole environment and not just an individual child.
- They have a commitment to identifying any barriers to inclusion and actively seeking solutions and strategies to address these.
- They collaborate and build partnerships with families and communities.



Find Gowrie SA on Facebook, Twitter, LinkedIn and Instagram to keep updated with news and events.

Contact us:

t 1800 129 606
e inclusion@gowriesa.org.au

Gowrie SA Inclusion Agency
43 Dew Street, Thebarton SA 5031

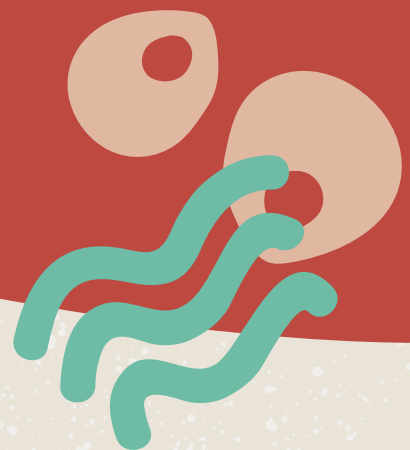


Gowrie SA Inclusion Agency

t 1800 129 606

e inclusion@gowriesa.org.au

43 Dew Street, Thebarton SA 5031



gowriesa.org.au



@gowriesa