

Applying for IDF Things to consider

Each of the (IDF) funding streams has a specific purpose with a different eligibility criteria and application process. Your service and the Inclusion Agency will determine the most suitable funding stream based on the services' needs. It is the service's responsibility to apply for ISP funding.

To support an IDF application you may be asked to sign a permission form and provide documentation about your child to access the programme.

Eligible documentation can include your child's Health Care Card with the code 'CD', or documentation to show your child is a National Disability Insurance Scheme (NDIS) participant. Other forms of documentation may also be accepted.

Your service will advise you whether you need to provide any documentation.

Ways the IDF subsidy can be utilised

- ▶ To increase the educator to child ratio to support inclusion of all children in centre-based services for a short or longer term period; or
- ▶ To provide a fee top up payment to FDC educators who cannot enrol the maximum number of children due to the impact of including a child with significant high support needs.

IDF subsidy cannot be used

- ▶ For one to one support
- ▶ For respite care
- ▶ To provide therapy or early intervention supports
- ▶ When children are being funded to participate in state funded preschool or kindergarten programs
- ▶ To provide medical/nursing assistance

The Inclusion Support Programme is funded by the Australian Government Department of Education and Training

Contact us for further information

Inclusion Development Fund Manager

T 1800 824 955

E idf@ku.com.au

www.idfm.org.au

Australian Government Department of Education and Training

www.education.gov.au

Inclusion Agencies

Each state/territory has an Inclusion Agency supporting early childhood and child care services.

For details of the IA in your local area, please visit

www.idfm.org.au

All images and artwork are from KU Services

© KU Children's Services 2016

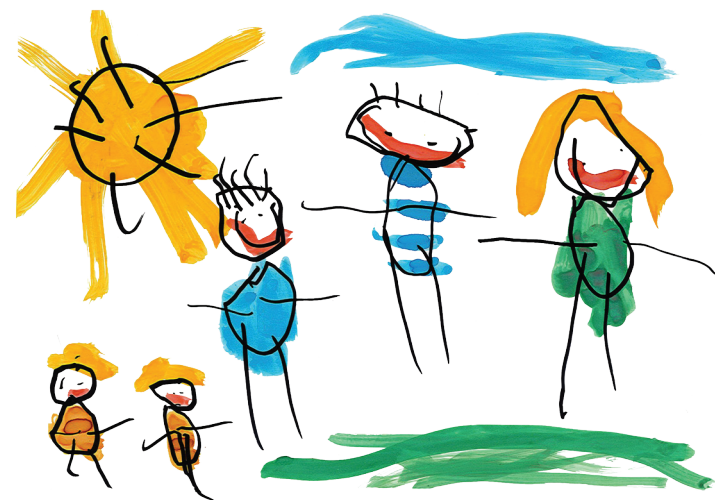
www.ku.com.au

Inclusion Support Programme

Inclusion Development Fund

Information for families

Supporting the inclusion of children with additional needs in early childhood and child care services



Artwork by Max, KU Bradfield Park Children's Centre



Inclusion Support Programme

The Australian Government funded Inclusion Support Programme (ISP) assists early childhood and child care services to include children with additional needs by providing tailored inclusion advice and support from state-wide Inclusion Agencies. The ISP also provides funding to address inclusion barriers and specialist equipment where required.

Inclusion Development Fund (IDF)

There are four different types of funding available to assist services:

1. IDF Subsidy for an Additional Educator
2. IDF Subsidy for Immediate/Time Limited Support
3. IDF Subsidy – Family Day Care Top Up
4. IDF Innovative Solutions Support

Each stream has different eligibility criteria, application processes and approved funding purposes.

Eligible early childhood and child care services

- ▶ CCB approved LDC, OSHC (including Vacation Care) and FDC services
- ▶ Occasional Care Services
- ▶ Mobile services
- ▶ Budget Based Funded (BBF) Program services

Children with additional needs

This may include:

- ▶ Children with a disability
- ▶ Children undergoing assessment for disability
- ▶ Children from culturally and linguistically diverse backgrounds
- ▶ Children from a refugee and humanitarian background
- ▶ Aboriginal and Torres Strait Islander children

For further information about eligibility for IDF funding and application requirements, please see the ISP Guidelines at www.education.gov.au

What does this mean for my child?

Centre-based services

If your child has additional needs, your service may be eligible to increase the number of educators for some of the time your child attends. An additional educator may be required for:

- ▶ A time limited period to help settle your child; or
- ▶ For a longer period to support your child's participation in the programme with their peers.

The additional educator works as a member of the team of educators to provide a quality inclusive education programme for all children, they are not funded to provide one to one support for an individual child.

Family Day Care (FDC) services

If an educator includes a child with additional needs requiring significant additional support, and the educator is unable to enrol the maximum number of children allowed under National Law, they may be eligible for a FDC Top Up payment.